



# HEALTH FACILITIES DETAILED REPORT

## HEALTH CARE FACILITIES IN NAVAPUR BLOCK



## Contents

1.	Abbreviations .....	3
2.	Background .....	5
3.	OBJECTIVES:.....	5
4.	LOCATION OF THE HOSPITALS.....	5
5.	PROCESS OF ASSESSMENT .....	6
6.	SUB DISTRICT HOSPITAL NAVAPUR .....	7
	<b>6.1. Existing Status of Hospital/WASH Infrastructure.....</b>	<b>7</b>
	<b>6.2. Status of WASH facilities:.....</b>	<b>8</b>
	<b>6.3. Existing Status of BMWM facilities:.....</b>	<b>9</b>
	<b>6.4. Proposed Hospital Infrastructure Renovation Action Plan.....</b>	<b>14</b>
7.	RURAL HOSPITAL VISARWADI .....	16
	<b>7.1. Existing Status of Hospital/WASH Infrastructure.....</b>	<b>16</b>
	<b>7.2. Existing Status of BMWM facilities:.....</b>	<b>17</b>
	<b>7.3. Current situation of WASH infrastructure:.....</b>	<b>18</b>
	<b>Water Filter.....</b>	<b>19</b>
	<b>Photographs.....</b>	<b>20</b>
	<b>7.4. Proposed Hospital Infrastructure Renovation Action Plan.....</b>	<b>20</b>
8.	PRIMARY HEALTH CENTRE CHINCHPADA .....	21
9.	PRIMARY HEALTH CENTRE GATADI .....	30
	<b>9.1. Existing Status of Hospital/Wash Infrastructure.....</b>	<b>30</b>
	<b>9.2. Existing Status of BMWM facilities:.....</b>	<b>32</b>
	<b>9.3. Proposed Hospital Infrastructure Renovation Action Plan.....</b>	<b>39</b>
10.	PRIMARY HEALTH CENTRE PRATAPPUR.....	41
	<b>10.1. Existing Status of Hospital/WASH Infrastructure.....</b>	<b>41</b>
	<b>10.2. Existing Status of BMWM facilities:.....</b>	<b>43</b>
	<b>10.3. Proposed Hospital Infrastructure Renovation Action Plan.....</b>	<b>47</b>
11.	PRIMARY HEALTH CENTRE UMRAAN.....	49
	<b>11.1. Existing Status of Hospital/Wash Infrastructure.....</b>	<b>49</b>
	<b>11.2. Existing Status of BMWM facilities:.....</b>	<b>51</b>
	<b>11.3. Proposed Hospital Infrastructure Renovation Action Plan.....</b>	<b>56</b>

12.	PRIMARY HEALTH CENTRE ZAMANZHAR .....	58
12.1.	<b>Existing Status of Hospital/Wash Infrastructure .....</b>	<b>58</b>
12.2.	<b>Existing Status of BMWM facilities: .....</b>	<b>60</b>
12.3.	<b>Proposed Hospital Infrastructure Renovation Action Plan .....</b>	<b>65</b>
13.	RURAL HOSPITAL KHANDBARA.....	67
13.3.	<b>Existing Status of BMWM facilities: .....</b>	<b>69</b>
13.4.	<b>Proposed Hospital Infrastructure Renovation Action Plan .....</b>	<b>72</b>
14.	<b>Total Cost per Healthcare facility .....</b>	<b>74</b>

## 1. Abbreviations

---

BMWM- Bio Medical Waste Management

CYDA- Centre for Youth Development and activities

FSM- Faecal Sludge Management

GF- Ground Floor

HDPE- High Density Poly Ethylene

HWS- Hand Wash Station

MO- Medical officer

OPD- Out Patient Department

OT- Operation Theatre

POU- Point of Utilization

PWSN – Person With Special Need

PWSS-Piped water supply scheme

RCC- Reinforced Cement Concrete

RO/UV- Reverse Osmosis, Ultraviolet

WASH- Water Sanitation and Hygiene

## 2. Background

---

CYDA in collaboration with Finish Society through NSE Foundation support is planning to implement “Improved WASH Access” in 5 Primary Health Centres, 2 Rural Hospitals and 1 Sub District Hospital in Navapur, Nandurbar. It is related to Bio Medical Waste Management and Water, Sanitation and Hygiene. The project will look into the gender perspectives to ensure access and use of WASH facilities in the Healthcare facilities. Children, adolescents and women are most affected among all during COVID-19 situation. The project will be implemented in the Government Facility targeting patients irrespective of class, gender and age disaggregation, etc. The access to these facilities is free or with very nominal fees. An effort will also be made to sensitize the staff of the Hospital on gender equity and access through interactions, orientation and bringing in the elements in the sops and checklists. The Prime Minister of India introduced the Swachh Bharat Abhiyan on 2nd of October, 2014 to promote cleanliness in public space. Cleanliness and hygiene are good for healthy living, but it becomes a need when we talk about health care facilities. Cleanliness not only prevents the spread of infection but also provides the patients and the visitors a positive experience.

Ministry of Health And Family Welfare, Government of India, has launched a national initiative on 15th of May, 2015 to promote cleanliness and enhance the quality of public health facilities. The purpose of this initiative is to appreciate and recognize their effort to create a healthy environment. Swachhta guidelines for health facilities along with this initiative have also been issued.

## 3. OBJECTIVES:

---

- A. To understand gaps in the existing WASH Infrastructure among the selected hospitals.
- B. To prepare action plan as per the gaps.
- C. To prepare an implementation plan to immediate support to improve the identified gaps.

## 4. LOCATION OF THE HOSPITALS

---

Sr. No.	Name of the Hospital	Location	No of staff	No od Patients flow

1	Sub-District Hospital Navapur	Navapur, Dist.-Nandurbar	70	300
2	Rural Hospital Visarwadi	Navapur, Dist.-Nandurbar	16	100
3	Rural Hospital Khandbara	Navapur, Dist.-Nandurbar	19	150
4	Primary Health Centre Chinchpada	Navapur, Dist.-Nandurbar	8	50
5	Primary Health Centre Gatadi	Navapur, Dist.-Nandurbar	11	40
6	Primary Health Centre Pratappur	Navapur, Dist.-Nandurbar	12	50
7	Primary Health Centre Umraan	Navapur, Dist.-Nandurbar	9	100
8	Primary Health Centre Zamanzhar	Navapur, Dist.-Nandurbar	10	50

## 5. PROCESS OF ASSESSMENT

---

- Introductory meeting with MS, MO, Nurses in charge and non-medical staff.
- Giving brief information about the project to the staff and finding out the existing gaps in the areas of WASH and BMWM.
- Transact walk with staff for the detailed assessment of WASH infrastructures and BMWM system.
- Finding out the gaps between WASH facilities by visiting each WASH infrastructure.
- Preparation of detailed estimate for the work which have to be done under project.
- Sharing the findings with the Medical Superintendent, Medical Officer as well as others to finalise the plan.

## 6. SUB DISTRICT HOSPITAL NAVAPUR

### 6.1. Existing Status of Hospital/WASH Infrastructure

Water	<ul style="list-style-type: none"> <li>➤ Drinking Water</li> </ul> <ol style="list-style-type: none"> <li>1. Source: Borewells</li> <li>2. Storage: water tank - 2000ltr</li> <li>3. RO/UV purifier is available but servicing of RO filter is needed.</li> </ol>
	<ul style="list-style-type: none"> <li>➤ Other Uses</li> </ul> <ol style="list-style-type: none"> <li>1. Source: Borewells – 2 Nos.</li> <li>2. Storage: <ul style="list-style-type: none"> <li>Common Use –</li> <li>RCC Overhead tank-30000ltr</li> <li>Water Tank 2000 ltr. – 4 Nos.</li> </ul> </li> </ol> <p>Total Storage: 38000 ltr.</p>
Toilet	<p>10 Toilets are available  No Toilets for PWSN  All are functional  No Cleaning material Available</p>
Hand Washing Station / wash Basin	<p>25 wash Basin are available  Out of 25 Basin 9 are Dysfunctional.</p>
Waste Segregation / Dustbin	<p>Not Enough  No partition available near dustbins  Dedicated storage available</p>
Hygiene	<p>No hand sanitizer before entry in the hospital</p>
BMWM	<p>Inadequate segregation  Trolley not available  Hand operated needle cutter available  Disposal system is waste transfer to the private agency</p>

## 6.2. Status of WASH facilities:

S. No		Current Status of Infrastructure			Requirements		Scope of Work
		Available	Functional	Dysfunctional	New Infrastructure	Retrofitting	Restoration work details
1	Water Source	2	2	0	0	0	-
2	Water Storage for Drinking Water	2000L	2000L	0	1000ltr	1	1000ltr separate tank to be provided for drinking purpose only and servicing of water filter is needed.
3	Water Storage for Other purpose	38000L	38000L	0		0	Storage capacity is enough for other purposes only tank cleaning is needed.
4	Drinking Water Station	1	1	0	1	0	New drinking water station is needed
5	Hand washing basins	25	16	9	2	9	Replacing with Elbow operated tap, fixing of new foot operated HWS.
6	Sanitizer stand	0	0	0	2	0	New foot operated hand free sanitizer stand fixing
7	Gents Toilets in Hospital	5	4	1	0	0	tap replace, leakage repairing etc
8	Ladies Toilet in Hospital	5	4	1	0	0	tap replace, leakage, chamber chokeup,new



S. No		Current Status of Infrastructure			Requirements		Scope of Work
		Available	Functional	Dysfunctional	New Infrastructure	Retrofitting	Restoration work details
							door, new flush cock is needed.
9	PWD toilet	0	0	0	1	0	New construction

### 6.3. Existing Status of BMWM facilities:

S. No		Current Status of Infrastructure			Requirements		Scope of Work
		Available	Functional	Dysfunctional	New Infrastructure	Retrofitting	Restoration work details
1	Separate dustbins	4	4	0	1	0	New dustbins required for segregation
2	Trolley to hold waste bins in wards / storage place	0	0	0	4	0	New required
3	Needle cutter machine	5	5	0	2	0	New required
4	Trolley for transportation	0	0	0	2	0	New required
5	Simple Trollies for transportation	0	0	0	2	0	New required
6	Dedicated storage facility/area/ room	1	1	0	0	0	-
7	Incinerator repair/ Installation/ Major work	0	0	0	1	-	New required

**SUB DISTRICT HOSPITAL NAVAPUR**



**Current situation of WASH infrastructure:**

**Water Storage -**



**Drinking water -**



**Hand Wash Basins –**



**Urinals -**



**Toilets -**



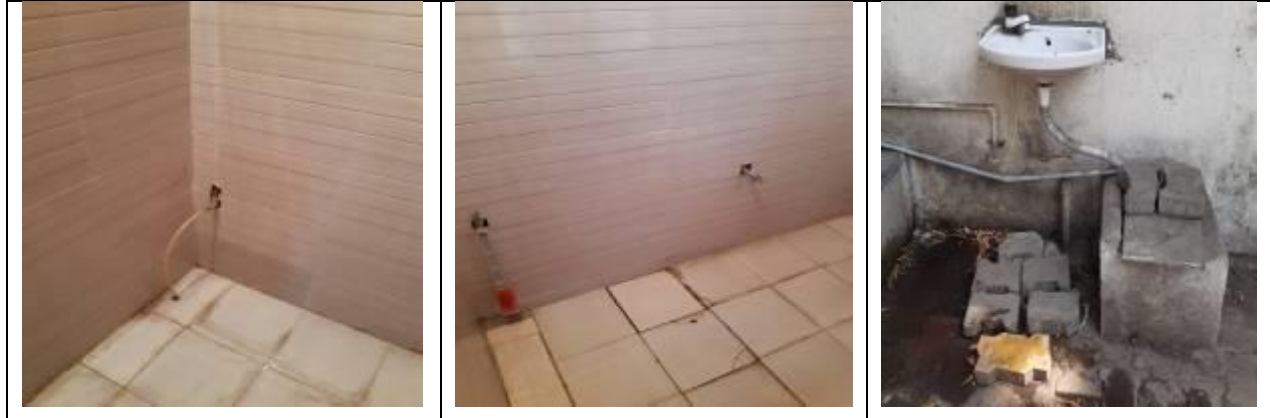
**Bathroom -**



**BMWM -**



**Others -**



6.4.

**Proposed Hospital Infrastructure Renovation Action Plan**

SUB DISTRICT HOSPITAL NAVAPUR					
Infrastructure	Description	Status	Need	Nos	cost
<b>Drinking water</b>	PWSS	OK	-	-	-
	Water filter	NA	-	-	-
	Water filter	NA	Servicing is needed	1	1500
<b>water storage</b>	Water tank for drinking purpose only	NA	Separate 1000ltr HDPE tank with all accessories and fitting such as inlet, outlet, overflow pipe etc.	1	12000
	Water tank	NA	-	-	-
<b>Hand wash basin</b>	25 basins at different locations	NA	25 Tap to be changed with elbow operated tap	25	25000
	New Basin		New basin fitting with all connection such as inlet, tap, angle cock etc	2	8000



	Basin	NA	4 Waste Pipe fitting, 7 inlet pipe fitting and repairing	7	1500
	Drainage waste water	NA	PVC drain pipe connection to chamber and new chamber cover	1	1800
<b>Urinals</b>	3 Urinals at different locations	NA	New Urinal fitting connection including urinal pan, pipe fitting etc	2	5000
	Angle cock fitting	NA	New angle cock fitting	1	500
<b>Toilet</b>	10 toilets at different locations	NA	Tap replace new bibcock fitting	2	1000
	New door	NA	New door fitting	2	4000
	Flush cock	NA	New flush cock fitting	4	4000
<b>Bathroom</b>	8 Nos of Bathroom at different rooms	NA	Bibcock fitting	3	1500
	New door	NA	New door fitting	1	2000
<b>Hand free hand wash</b>	New HWS	NA	New HWS pedal foot operated soap dispenser hand wash station	2	15382
	Hand wash liquid with bottle		New	2	600
	sanitizer stand		New	4	8000
	Hand wash liquid		5ltr can + 500 2 bottles	4	2800
<b>BMWM</b>	Separate dustbins	NA	2 set of dustbins		5600
	Trolley	NA	hold waste bins in wards / storage place	1	7500
	Needle cutter machine	NA	Electrically operated	2	3000
	Trolley	NA	For transportation	1	15000
	Simple Trollies	NA	For transportation	2	4000
	Dedicated storage facility/area/ room	OK	-	-	-
	Incinerator repair/ Installation/ Major work	NA	-	-	-
<b>IEC</b>	IEC Poster	NA	New Design IEC for wash, hygiene, BMW	1	10000

<b>Total</b>	<b>139682</b>
--------------	---------------

## 7. RURAL HOSPITAL VISARWADI

### 7.1. Existing Status of Hospital/WASH Infrastructure

S. No		Current Status of Infrastructure			Requirements		Scope of Work
		Available	Functional	Dysfunctional	New Infrastructure	Retrofitting	Restoration work details
1	Water Source	1	1	0	0	0	This bore-well in the road
2	Water Storage for Drinking Water	0L	0L	0	1x1000ltr	0	Need new 1000 Ltr water tank
3	Water Storage for Other purpose	25000L	25000L	0L	2x5000ltr	3	Need two new water tank & other tanks need tanks cover
4	Drinking	2	1	1	1	2	New water filter



S. No		Current Status of Infrastructure			Requirements		Scope of Work
		Available	Functional	Dysfunctional	New Infrastructure	Retrofitting	Restoration work details
	Water Station						and Servicing of available 2 units
5	Hand washing basins	14	14	0	2	8	Replacing tap with Elbow operated tap, fixing of foot operated HWS.
6	Sanitizer stand	0	0	0	2	0	New sanitizer stand fixing
7	Gents Toilets in Hospital	1	1	0	0	0	-
8	Ladies Toilet in Hospital	1	1	0	0	0	-
8	common Toilet in Hospital	6	6	0	0	4	Chock up removal and chamber cleaning
9	PWD toilet	0	0	0	1	0	New construction

## 7.2. Existing Status of BMWM facilities:

S. No		Current Status of Infrastructure			Requirements		Scope of Work
		Available	Functional	Dysfunctional	New Infrastructure	Retrofitting	Restoration work details
1	Separate dustbins	2	2	0	1	0	New dustbins required for segregation
2	Trolley to hold waste bins in wards / storage place	0	0	0	2	0	New required
3	Needle cutter machine	0	0	0	2	0	New required
4	Trolley for transportation	0	0	0	1	0	New required

S. No		Current Status of Infrastructure			Requirements		Scope of Work
		Available	Functional	Dysfunctional	New Infrastructure	Retrofitting	Restoration work details
5	Simple Trolleys for transportation	0	0	0	1	0	New required
6	Dedicated storage facility/area/ room	1	1	0	0	0	-
7	Incinerator repair/ Installation/ Major work	0	0	0	1	-	New required

**7.3. Current situation of WASH infrastructure:**

**Water tank**



**Water Filter**



**Wash Basin**



**Toilet**



**Dust Bins**



**Photographs**

**7.4. Proposed Hospital Infrastructure Renovation Action Plan**

RURAL HOSPITAL Visarwadi					
Infrastructure	Description	Status	Need	Nos	Cost

<b>Drinking water</b>	PWSS	OK	-	-	-
	Water filter	Defunct	Servicing	2	2000
	Water filter	NA	New installation	1	10000
<b>water storage</b>	Overhead HDPE water tank	Defunct	all overhead RCC tank to be replaced with HDPE tank	3	1,43,000
<b>Hand wash basin</b>	14 basins at different locations	OK	Tap to be changed with elbow operated tap	8	8000
<b>Toilet</b>	8 toilets at different locations	Defunct	chock up removal by chamber cleaning	4	2000
<b>Hand free hand wash basin</b>	Fabricated stand	NA	New	2	9000
	Plumbing with all fitting	NA	New	2	5544
	Hand wash liquid with bottle		New	2	600
	Painting		New	2	238
	sanitizer stand		New	2	4000
	Hand wash liquid		5ltr can + 500ml 2 bottles	2	1400
<b>BMWM</b>	Separate dustbins	NA	1 set of dustbins	1	2800
	Trolley	NA	hold waste bins in wards / storage place	2	15000
	Needle cutter machine	NA	Electrically operated	2	3000
	Trolley	NA	For transportation	1	15000
	Simple Trollies	NA	For transportation	1	2000
	Dedicated storage facility/area/ room	OK	-	-	-
	Incinerator repair/ Installation/ Major work	NA	-	-	-
<b>IEC</b>	IEC Material	NA	-	-	15000
				<b>Total</b>	<b>2,38,582</b>

## 8. PRIMARY HEALTH CENTRE CHINCHPADA

### 8.1. Existing Status of Hospital/Wash Infrastructure

S. No		Current Status of Infrastructure			Requirements		Scope of Work
		Available	Functional	Dysfunctional	New Infrastructure	Retrofitting	Restoration work details
<b>Water Source</b>							
1	G.P. Pipe Line	-	-	-	-	-	-
2	Bore Well	1	1	0	0	0	-
<b>Water Storage</b>							
1	Water Storage for Drinking Water	500L	500L	0	1	0	500ltr separate tank to be provided for drinking purpose only and servicing of water filter is needed and soak pit require for waste water management.
2	Water Storage for Other purpose	3000L	3000L	0	0	0	Storage capacity is enough for other purposes only tank cleaning and leakage to be repaired.
4	Drinking Water Station	1	1	0	1	1	New DWS structure is needed. Need servicing to available DWS.
<b>HWS/ Wash Basin/ Sanitizer Stand</b>							
5	Hand washing basins	2	1	1	0	2	Replacing with Elbow operated tap, fixing of new foot operated HWS.
6	Sanitizer stand	0	0	0	2	0	New foot operated hand free sanitizer stand fixing.
<b>Toilets</b>							

S. No		Current Status of Infrastructure			Requirements		Scope of Work
		Available	Functional	Dysfunctional	New Infrastructure	Retrofitting	Restoration work details
7	Gents Toilets in Hospital	1	1	0	0	2	Retrofitting is needed tap replace, leakage repairing, floor tile, pan ,plumbing etc.
8	Ladies Toilet in Hospital	1	1	1	0	1	Retrofitting needed flooring,pan,plumbing work tap replace, leakage,chamber chokeup
8	common Toilet in Hospital	1	0	1	0	1	Chock up clearance and chamber cleaning
9	PWD toilet	0	0	0	1	0	New construction

## 8.2. Existing Status of BMWM facilities:

S. No		Current Status of Infrastructure			Requirements		Scope of Work
		Available	Functional	Dysfunctional	New Infrastructure	Retrofitting	Restoration work details
1	Separate dustbins	3	3	0	1	0	New dustbins required for segregation
2	Trolley to hold waste bins in wards / storage place	0	0	0	2	0	New required
3	Needle cutter machine	1	1	0	1	0	New required
4	Trolley for transportation	0	0	0	1	0	New required
5	Simple	0	0	0	1	0	New required



S. No		Current Status of Infrastructure			Requirements		Scope of Work
		Available	Functional	Dysfunctional	New Infrastructure	Retrofitting	Restoration work details
	Trollies for transportation						
6	Dedicated storage facility/area/ room	1	1	0	0	0	-
7	Incinerator repair/ Installation/ Major work	0	0	0	1	-	New required

### PHC CHINCHPADA



#### Current situation of WASH infrastructure:

**Water Storage –**





**Drinking water -**



**Hand Wash -**

**Basins -**



Toilets -





**Bathroom -**



**BMWM -**





Others –



### 8.3. Proposed Hospital Infrastructure Renovation Action Plan

PHC, CHINCPADA					
Infrastructure	Description	Status	Need	Nos	Cost
<b>Drinking water</b>	PWSS	OK	-	-	-
	Water filter	OK	-	-	-
	New Water Filter	NA	New	1	10000
	Soak pit	NA	New soak pit construction	1	4174
<b>water storage</b>	Water tank	Available	Cleaning of Water tank	3	600
<b>Hand wash basin</b>	2 basins at different locations	Available	2 Tap to be changed with elbow operated tap.	2	2000

PHC, CHINCHPADA					
Infrastructure	Description	Status	Need	Nos	Cost
	Basin	-	1 Waste Pipe fitting, 1 Basin leakage, drainage clearance	1	1000
<b>Hand free hand wash basin</b>	HWS	NA	New HWS pedal foot operated soap dispenser hand wash station	1	7691
	Soak pit	NA	New construction of Soak pit for waste water management	1	4174
	Hand wash liquid with bottle	NA	New	3	900
	Hand wash liquid	NA	5ltr can + 500 2 bottles	1	700
<b>Sanitizer Stand</b>	sanitizer stand	NA	New	1	2000
<b>Urinals</b>	4 Urinals at different locations	Ok	Inlet pipe fitting, angle cock fitting in 1 urinal	1	500
<b>Toilet</b>	3 toilets at different locations	Dysfunctional	Retrofitting is needed 3 toilets	3	52000
	Bibcock	NA	Bibcock	3	1500
	Flush cock	NA	New flush cock fitting	3	3000
<b>Bathroom</b>	3 Bathrooms	NA	Chamber cleaning, blockage, drain jhali, leakage repairing work	3	1500
	Bibcock	NA	New Bibcock	4	2000
<b>BMWM</b>	Separate dustbins	NA	1 set of dustbins		2800
	Trolley	NA	hold waste bins in wards / storage place	1	7500
	Needle cutter machine	NA	Electrically operated	1	1500
	Trolley	NA	For transportation	1	15000
	Simple Trollies	NA	For transportation	1	2000
	Dedicated storage facility/area/ room	OK	-	-	-

PHC, CHINCHPADA					
Infrastructure	Description	Status	Need	Nos	Cost
	Incinerator repair/ Installation/ Major work	NA	-	-	-
IEC	IEC Posters	NA	IEC poster for hand wash, BMW etc.	10	10000
				<b>Total</b>	<b>1,32,539</b>

## 9. PRIMARY HEALTH CENTRE GATADI

### 9.1. Existing Status of Hospital/Wash Infrastructure

Water	<ul style="list-style-type: none"> <li>➤ Drinking Water</li> <li>1. Source: PWSS from Gram panchayat.</li> <li>2. Storage: Jar and steel utensil – 30ltr</li> <li>3. RO/UV purifier is not available.</li> </ul>
-------	--

	<p>➤ Other Uses</p> <p>1. Source: Grampanchayat pipeline supply.</p> <p>2. Storage:</p> <p>Common Use - Water Tank 1000 ltr. – 2 Nos.</p> <p>Hand wash purpose – 2000ltr tank</p> <p>Total Storage: 3000 ltr.</p>
Toilet	<p>6 Toilets are available</p> <p>No Toilets for PWSN</p> <p>All are functional</p> <p>No Cleaning material Available</p>
Hand Washing Station / wash Basin	<p>7 wash Basin are available</p> <p>Out of 7 Basin 3 are Dyfunctional</p>
Waste Segregation / Dustbin	<p>Not Enough</p> <p>No partition available near dustbins</p> <p>Dedicated storage available</p>
Hygiene	<p>No hand sanitizer before entry in the hospital</p>
BMWM	<p>Inadequate segregation</p> <p>Trolley not available</p> <p>Hand operated needle cutter available</p> <p>Disposal system is waste transfer to the private agency</p>

**Status of WASH facilities:**

S. No		Current Status of Infrastructure			Requirements		Scope of Work
		Available	Functional	Dysfunctional	New Infrastructure	Retrofitting	Restoration work details
1	Water Source	1	1	0	0	0	-
2	Water Storage for Drinking Water	30L	30L	0	500ltr	1	500ltr separate tank to be provided for drinking purpose only and new water filter is

S. No		Current Status of Infrastructure			Requirements		Scope of Work
		Available	Functional	Dysfunctional	New Infrastructure	Retrofitting	Restoration work details
							needed.
3	Water Storage for Other purpose	3000L	3000L	0		0	Storage capacity is enough for other purposes only tank cleaning and leakage to be repaired.
4	Drinking Water Station	0	0	0	1	0	New RO and new DWS structure is needed.
5	Hand washing basins	7	4	3	0	3	Replacing with Elbow operated tap, fixing of new foot operated HWS.
6	Sanitizer stand	0	0	0	2	0	New foot operated handfree sanitizer stand fixing
7	Gents Toilets in Hospital	2	1	1	0	0	tap replace, leakage repairing etc
8	Ladies Toilet in Hospital	3	2	1	0	0	tap replace, leakage, chamber chokeup
8	common Toilet in Hospital	1	7	0	0	4	Chock up clearance and chamber cleaning
9	PWD toilet	0	0	0	1	0	New construction

### 9.2. Existing Status of BMWM facilities:

S. No		Current Status of Infrastructure			Requirements		Scope of Work
		Available	Functional	Dysfunctional	New Infrastructure	Retrofitting	Restoration work details
1	Separate	6	6	0	1	0	New dustbins



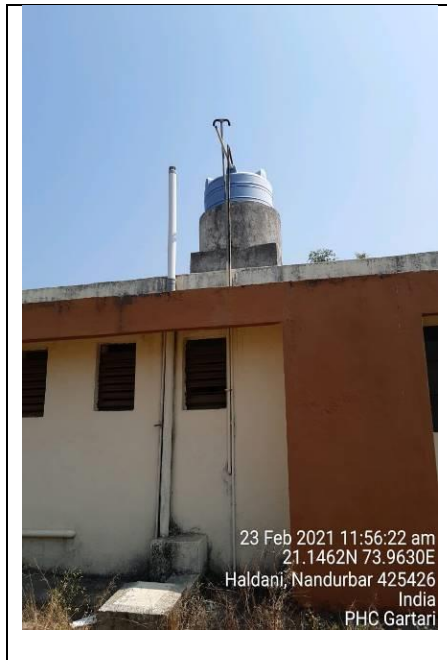
S. No		Current Status of Infrastructure			Requirements		Scope of Work
		Available	Functional	Dysfunctional	New Infrastructure	Retrofitting	Restoration work details
	dustbins						required for segregation
2	Trolley to hold waste bins in wards / storage place	0	0	0	2	0	New required
3	Needle cutter machine	1	1	0	1	0	New required
4	Trolley for transportation	0	0	0	1	0	New required
5	Simple Trolleys for transportation	0	0	0	1	0	New required
6	Dedicated storage facility/area/ room	1	1	0	0	0	-
7	Incinerator repair/ Installation/ Major work	0	0	0	1	-	New required

**PHC, Gatadi**



**Current situation of WASH infrastructure:**

**Water Storage -**



**Drinking water -**

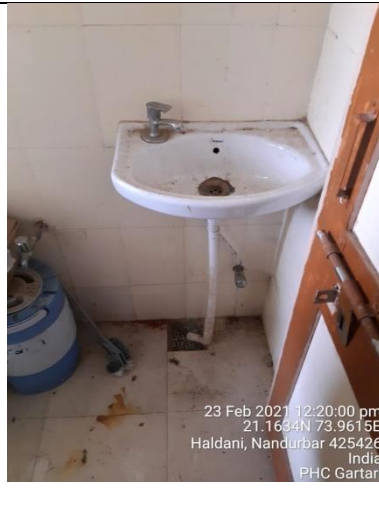


**Hand Wash –**



**Basins –**





**Urinals -**



**Toilets -**





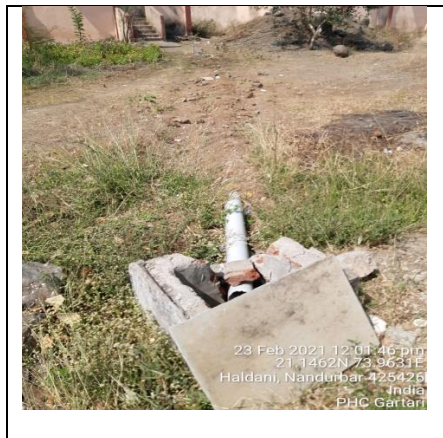
**Bathroom -**



**BMWM -**



**LWM -**



**Beds -**



### 9.3. Proposed Hospital Infrastructure Renovation Action Plan

PHC GATADI					
Infrastructure	Description	Status	Need	Nos	Cost
<b>Drinking water</b>	PWSS	OK	-	-	-
	Water filter	NA	-	-	-
	Water filter	NA	New installation	1	10000
<b>water storage</b>	Water tank for drinking purpose only	NA	Separate 500ltr HDPE tank with all accessories and fitting such as inlet, outlet, overflow pipe etc.	1	7000
	Water tank	NA	Cleaning of Water tank	2	600
<b>Hand wash basin</b>	7 basins at different locations	NA	7 Tap to be changed with elbow operated tap, 3 basin waste pipes for drain	7	7500
	Basin	NA	2 Waste Pipe fitting, 7 Basin leakage, choke up clearance	7	2000
<b>Hand wash structure</b>	Restoration of HWS	OK	Restoration of HWS such as brickwork, plastering, floor	1	5000



PHC GATADI					
Infrastructure	Description	Status	Need	Nos	Cost
			tiling etc.		
	Soak pit	NA	New construction of Soak pit for waste water management	1	6300
<b>Urinals</b>	4 Urinals at different locations	Ok	Inlet pipe fitting, angle cock fitting in 1 urinal	1	600
<b>Toilet</b>	6 toilets at different locations	functional	chock up removal, chamber cleaning	5	1500
	Flush cock	NA	New flush cock fitting	3	3000
<b>Hand free hand wash basin</b>	Fabricated stand	NA	New	1	4500
	Plumbing with all fitting	NA	New	1	1500
	Hand wash liquid with bottle		New	1	300
	Painting		New	1	119
	sanitizer stand		New	2	4000
	Hand wash liquid		5ltr can + 500 2 bottle	1	700
<b>BMWM</b>	Separate dustbins	NA	1 set of dustbins		2800
	Trolley	NA	hold waste bins in wards / storage place	1	7500
	Needle cutter machine	NA	Electrically operated	1	1500
	Trolley	NA	For transportation	1	15000
	Simple Trollies	NA	For transportation	1	2000
	Dedicated storage facility/area/ room	OK	-	-	-
	Incinerator repair/ Installation/ Major work	NA	-	-	-
<b>IEC</b>	IEC Posters	NA	IEC Design for hand wash, hygiene, BMW	1	10000



PHC GATADI					
Infrastructure	Description	Status	Need	Nos	Cost
				<b>Total</b>	<b>93419</b>

## 10. PRIMARY HEALTH CENTRE PRATAPPUR

### 10.1. Existing Status of Hospital/WASH Infrastructure

Water	<ul style="list-style-type: none"> <li>➤ Drinking Water</li> <li>1. Source: PWSS from Gram Panchayat</li> <li>2. Storage: 10 ltr. Pot</li> <li>3. RO/UV purifier is there but not fitted.</li> </ul>
-------	--

	<p>➤ Other Uses</p> <p>1. Source: Gram Panchayat</p> <p>2. Storage: 500 ltr</p> <p>Total Storage: 500 ltr.</p>
Toilet	<p>6 Toilets are available</p> <p>No Toilets for PWSN</p> <p>2 functional and 4 dysfunctional</p> <p>No Cleaning material Available</p>
Hand Washing Station / wash Basin	<p>6 wash Basin are available.</p> <p>2 functional and 4 dysfunctional</p>
Waste Segregation / Dustbin	<p>Not Enough</p> <p>No partition available near dustbins</p> <p>Dedicated storage available</p>
Hygiene	<p>No hand sanitizer before entry in the hospital</p>
BMWM	<p>Inadequate segregation</p> <p>Trolley not available</p> <p>Hand operated needle cutter is not available</p> <p>Disposal system is waste transfer to the nearby landfill.</p>

### Status of WASH facilities:

S. No		Current Status of Infrastructure			Requirements		Scope of Work
		Available	Functional	Dysfunctional	New Infrastructure	Retrofitting	Restoration work details
1	Water Source	1	1	0	0	0	-
2	Water Storage for Drinking Water	10L	10L	0	1	0	500ltr Water Tank for drinking purpose only

S. No		Current Status of Infrastructure			Requirements		Scope of Work
		Available	Functional	Dysfunctional	New Infrastructure	Retrofitting	Restoration work details
3	Water Storage for Other purpose	500L	0	500L	1	0	1000ltr Water tank for common purpose uses
4	Drinking Water Station	0	0	0	1	0	Servicing of available RO.
5	Hand washing basins	6	2	4	2	-	New wash basin fitting
6	Sanitizer stand	0	0	0	2	0	New sanitizer stand fixing
7	Gents Toilets in Hospital	2	0	2	0	0	-
8	Ladies Toilet in Hospital	2	1	1	0	0	-
8	common Toilet in Hospital	2	0	2	0	0	Chock up removal and chamber cleaning
9	PWD toilet	0	0	0	1	0	New construction

### 10.2. Existing Status of BMWM facilities:

S. No		Current Status of Infrastructure			Requirements		Scope of Work
		Available	Functional	Dysfunctional	New Infrastructure	Retrofitting	Restoration work details
1	Separate dustbins	2	2	0	1	0	New dustbins required for segregation
2	Trolley to hold waste bins in wards / storage place	0	0	0	2	0	New required
3	Needle cutter machine	0	0	0	1	0	New required

S. No		Current Status of Infrastructure			Requirements		Scope of Work
		Available	Functional	Dysfunctional	New Infrastructure	Retrofitting	Restoration work details
4	Trolley for transportation	0	0	0	1	0	New required
5	Simple Trolleys for transportation	0	0	0	1	0	New required
6	Dedicated storage facility/area/ room	1	1	0	0	0	-
7	Incinerator repair/ Installation/ Major work	0	0	0	1	-	New required

**Current situation of WASH infrastructure:**



**Current situation of WASH infrastructure:**

**Water Storage -**

**Drinking water -**



**Hand Wash Basins –**



**Toilets -**



**Bathroom -**



**BMWM -**



Others -



### 10.3. Proposed Hospital Infrastructure Renovation Action Plan

PHC PRATAPPUR					
Infrastructure	Description	Status	Need	Nos	cost
Drinking water	PWSS	OK	-	-	-
	Water filter	NA	Fitting/Serviceing	2	4000
	Water filter	NA	-	-	-



PHC PRATAPPUR					
Infrastructure	Description	Status	Need	Nos	cost
<b>water storage</b>	Water tank for drinking purpose only	NA	Separate 500ltr HDPE tank with all accessories and fitting such as inlet, outlet, overflow pipe etc.	1	6500
	Water tank for Other purpose only	NA	Separate 1000ltr HDPE tank with all accessories and fitting such as inlet, outlet, overflow pipe etc.	1	13000
<b>Hand wash basin</b>	6 basins at different locations	NA	6 Tap to be changed with elbow operated tap.	6	6000
	Basin	NA	New Basin fitting	4	16000
<b>Hand wash structure</b>	Hand Wash Station	NA	New Pedal foot operated soap dispenser hand free HWS	1	7691
<b>Toilet</b>	6 toilets at different locations	functional	New Bibcock fitting	2	1000
	Flush cock	NA	New flush cock fitting	2	2000
<b>Bathroom</b>	2 Bathroom one gents and one for ladies	NA	New bib cock fitting	3	1500
		NA	PVC Jhali Fitting	4	160
<b>Hand free hand wash basin</b>					
	Hand wash liquid with bottle		New	1	300
	sanitizer stand		New	2	4000
	Hand wash liquid		5ltr can + 500ml 2 bottles	1	700
<b>BMWM</b>	Separate dustbins	NA	1 set of dustbins		2800
	Trolley	NA	hold waste bins in wards / storage place	1	7500
	Needle cutter machine	NA	Electrically operated	1	1500

PHC PRATAPPUR					
Infrastructure	Description	Status	Need	Nos	cost
	Simple Trollies	NA	For transportation	1	2000
	Dedicated storage facility/area/ room	OK	-	-	-
	Incinerator repair/ Installation/ Major work	NA	-	-	-
				<b>Total</b>	<b>76651</b>

## 11. PRIMARY HEALTH CENTRE UMRAAN

### 11.1. Existing Status of Hospital/Wash Infrastructure

Water	<ul style="list-style-type: none"> <li>➤ Drinking Water</li> </ul> <ol style="list-style-type: none"> <li>1. Source: PWSS from Gram panchayat.</li> <li>2. Storage: water tank – 20ltr</li> <li>3. RO/UV purifier is available but they are not using it.</li> </ol>
	<ul style="list-style-type: none"> <li>➤ Other Uses</li> </ul> <ol style="list-style-type: none"> <li>1. Source: Gram panchayat pipeline supply.</li> <li>2. Storage: <ul style="list-style-type: none"> <li>Common Use -1000 ltr. and 500ltr tank</li> </ul> </li> </ol>

	Total Storage: 1500 ltr.
Toilet	2 Toilets are available No Toilets for PWSN All are functional No Cleaning material Available
Hand Washing Station / wash Basin	2 wash Basin are available Out of 2 Basin 1 is Dyfunctional
Waste Segregation / Dustbin	Not Enough No partition available near dustbins Dedicated storage available
Hygiene	No hand sanitizer before entry in the hospital
BMWM	Inadequate segregation Trolley not available Hand operated needle cutter available Disposal system is waste transfer to the private agency

### Status of WASH facilities:

S. No		Current Status of Infrastructure			Requirements		Scope of Work
		Available	Functional	Dysfunctional	New Infrastructure	Retrofitting	Restoration work details
1	Water Source	1	1	0	0	0	-
2	Water Storage for Drinking Water	20L	20L	0	500ltr	1	500ltr separate tank to be provided for drinking purpose only and new water filter is needed.
3	Water Storage for	1500L	1000L	500L	1	0	Separate 2 Nos of 1000ltr water

S. No		Current Status of Infrastructure			Requirements		Scope of Work
		Available	Functional	Dysfunctional	New Infrastructure	Retrofitting	Restoration work details
	Other purpose						tank for gents and ladies toilet
4	Drinking Water Station	1	0	0	1	0	New DWS structure is needed.
5	Hand washing basins	2	1	1	1	0	New hand wash structure is needed and 2 elbow operated tap
6	Sanitizer stand	0	0	0	2	0	New foot operated handfree sanitizer stand fixing
7	Gents Toilets in Hospital	1	1	0	0	0	tap replace, leakage repairing and drain jail fitting etc
8	Ladies Toilet in Hospital	1	1	0	0	0	tap replace, leakage, chamber chokeup and drain jhali fixing etc
8	common Toilet in Hospital	0	0	0	0	0	-
9	PWD toilet	0	0	0	1	0	New construction

### 11.2. Existing Status of BMWM facilities:

S. No		Current Status of Infrastructure			Requirements		Scope of Work
		Available	Functional	Dysfunctional	New Infrastructure	Retrofitting	Restoration work details
1	Separate	3	3	0	1	0	New dustbins

S. No		Current Status of Infrastructure			Requirements		Scope of Work
		Available	Functional	Dysfunctional	New Infrastructure	Retrofitting	Restoration work details
	dustbins						required for segregation
2	Trolley to hold waste bins in wards / storage place	0	0	0	2	0	New required
3	Needle cutter machine	2	2	0	1	0	New required
4	Trolley for transportation	0	0	0	1	0	New required
5	Simple Trolleys for transportation	0	0	0	1	0	New required
6	Dedicated storage facility/area/ room	1	1	0	0	0	-
7	Incinerator repair/ Installation/ Major work	0	0	0	1	-	New required

### PHC UMARAN



**Current situation of WASH infrastructure:**

**Water Storage -**

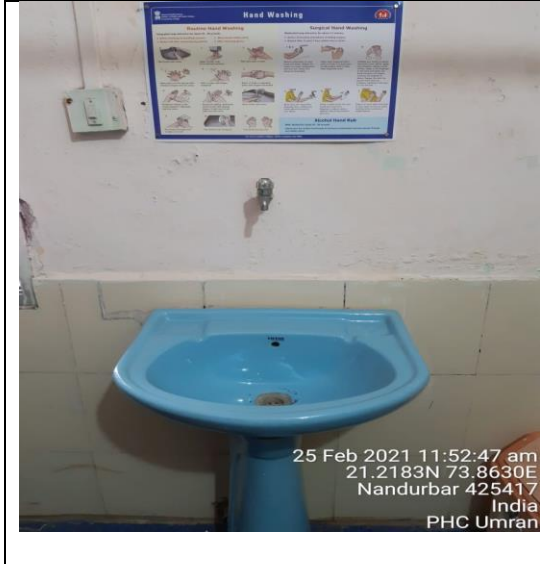


**Drinking water -**



**Hand Wash -**

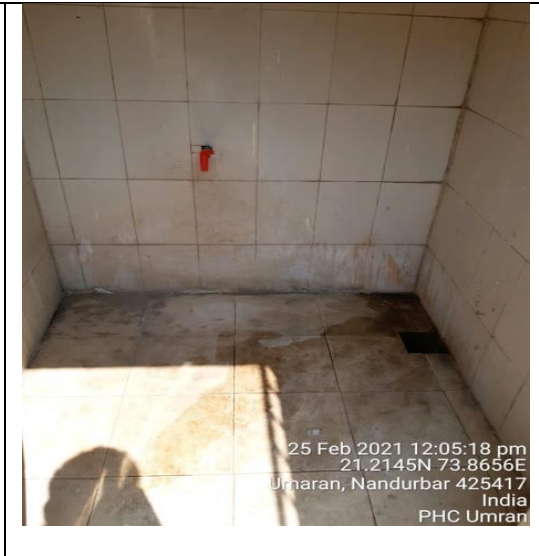




**Toilets -**



**Bathroom -**



**BMWM -**



**LWM -**



### 11.3. Proposed Hospital Infrastructure Renovation Action Plan

PHC UMARAN					
Infrastructure	Description	Status	Need	Nos	cost
Drinking water	PWSS	OK	-	-	-
	Water filter	NA	-	-	-
	Water filter	OK	-	-	-
water storage	Water tank for drinking purpose only	NA	Separate 500ltr HDPE tank with all accessories and fitting such as inlet, outlet, overflow pipe etc.	1	6500
		NA	Separate 1000ltr HDPE tank with all accessories and fitting such as inlet, outlet, overflow pipe etc.	1	10000
Hand wash basin	2 basins at different locations	NA	1 Tap to be changed with elbow operated tap.	1	1000
Hand wash structure	Hand wash structure is not there.	NA	New pedal foot operated soap dispenser hand wash station	1	7691
Bathrooms	20 Nos of bathroom available one for gents and one for ladies.	NA	New bibcock fitting	2	1000
Toilet	2 toilets at different	functional	New bibcock fitting	2	1000

PHC UMARAN					
Infrastructure	Description	Status	Need	Nos	cost
	locations				
		NA	Waste water management new Chamber cleaning, drainpipe fitting	1	6000
<b>Hand free hand wash basin</b>					
	Hand wash liquid with bottle		New	1	300
	sanitizer stand		New	2	4000
	Hand wash liquid		5ltr can + 500 2 bottles	1	700
<b>BMWM</b>	Separate dustbins	NA	1 set of dustbins		2800
	Trolley	NA	hold waste bins in wards / storage place	1	7500
	Needle cutter machine	-	Electrically operated	-	-
	Simple Trollies	NA	For transportation	1	2000
	Dedicated storage facility/area/ room	OK	-	-	-
	Incinerator repair/ Installation/ Major work	NA	-	-	-
				<b>Total</b>	<b>48491</b>

## 12. PRIMARY HEALTH CENTRE ZAMANZHAR

### 12.1. Existing Status of Hospital/Wash Infrastructure

Water	<p>➤ Drinking Water</p> <ol style="list-style-type: none"> <li>1. Source: Hand pump, submersible pump</li> <li>2. Storage: water tank –25 ltr</li> <li>3. RO/UV purifier is available but Dysfunctional maintenance and servicing is needed.</li> </ol>
	<p>➤ Other Uses</p> <ol style="list-style-type: none"> <li>1. Source: Submersible pump , hand pump</li> <li>2. Storage:  Common Use - Water Tank 2000 ltr. - 2Nos.</li> </ol> <p>Total Storage: 2000 ltr.</p>
Urinals	4 Nos are available from which 2 nos of urinal are dysfunctional.
Toilet	<p>5 Toilets are available No Toilets for PWSN 3 are functional and 2 dysfunctional. No Cleaning material Available and regular maintenance and cleaning of toilet is not done by sweeper.</p>
Bathroom	<p>3 Nos of bathroom are available. From which one is dysfunctional.</p>
Hand Washing Station / wash Basin	<p>8 wash Basin are available Out of 2 Basin one is Dysfunctional.</p>
Waste Segregation / Dustbin	<p>Not Enough No partition available near dustbins Dedicated storage available</p>

Hygiene	No hand sanitizer before entry in the hospital
BMWM	Inadequate segregation Trolley not available Hand operated needle cutter available Disposal system is waste transfer to the private agency

**Status of WASH facilities:**

S. No		Current Status of Infrastructure			Requirements		Scope of Work
		Available	Functional	Dysfunctional	New Infrastructure	Retrofitting	Restoration work details
1	Water Source	1	1	0	0	0	-
2	Water Storage for Drinking Water	500L	500L	0	1	0	500ltr separate tank to be provided for drinking purpose only and servicing of water filter is needed.
3	Water Storage for Other purpose	2000L	1000L	1000L	1	0	1000ltr separate tank is needed for common purpose use
4	Drinking Water Station	1	0	1	1	0	New DWS structure is needed.
5	Hand washing basins	8	6	2	0	2	Replacing with Elbow operated tap, fixing of new foot operated HWS.
6	Sanitizer stand	0	0	0	2	0	New foot operated hand free sanitizer stand fixing.



S. No		Current Status of Infrastructure			Requirements		Scope of Work
		Available	Functional	Dysfunctional	New Infrastructure	Retrofitting	Restoration work details
7	Gents Toilets in Hospital	2	1	1	0	1	tap replacement needed
8	Ladies Toilet in Hospital	2	1	1	0	2	Tap replacement needed
8	common Toilet in Hospital	1	1	0	0	1	Chock up clearance and chamber cleaning
9	PWD toilet	0	0	0	1	0	New construction

### 12.2. Existing Status of BMW facilities:

S. No		Current Status of Infrastructure			Requirements		Scope of Work
		Available	Functional	Dysfunctional	New Infrastructure	Retrofitting	Restoration work details
1	Separate dustbins	3	3	0	1	0	New dustbins required for segregation
2	Trolley to hold waste bins in wards / storage place	0	0	0	2	0	New required
3	Needle cutter machine	1	1	0	1	0	New required
4	Trolley for transportation	0	0	0	1	0	New required
5	Simple Trollies for transportation	0	0	0	1	0	New required
6	Dedicated storage facility/area/ room	1	1	0	0	0	-
7	Incinerator repair/ Installation/ Major work	0	0	0	1	-	New required

**PHC ZAMANZAR**



**Current situation of WASH infrastructure:**

**Drinking water -**



**Hand Wash -**

**Basins -**



**Toilets -**

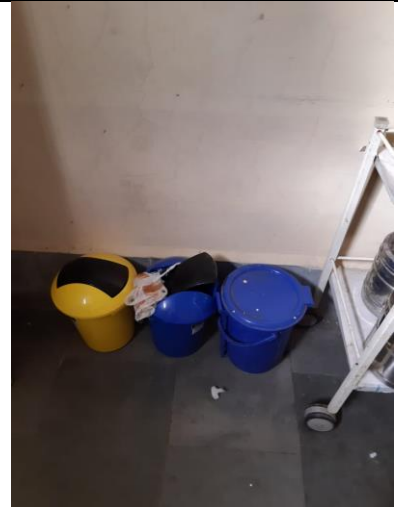


**Bathroom -**



**BMWM -**





**Urinals –**



### 12.3. Proposed Hospital Infrastructure Renovation Action Plan

PHC ZAMANZAR					
Infrastructure	Description	Status	Need	Nos	cost
<b>Drinking water</b>	PWSS	OK	-	-	-
	Water filter	NA	-	-	-
	Water filter	NA	servicing	1	2000
<b>water storage</b>	Water tank for drinking purpose	NA	500ltr water tank fitting with all accessories	1	6500
	Water tank for other purpose	NA	1000ltr water tank fitting with all accessories	1	13000
<b>Hand wash basin</b>	8 basins at different rooms	NA	8 Tap to be changed with elbow operated tap.	8	8000
<b>Hand wash structure</b>	HWS	OK	New HWS pedal foot operated soap dispenser hand wash station	1	7691
	Soak pit	NA	New construction of Soak pit for waste water management	1	4174
<b>Urinals</b>	4 Urinals at different locations	NA	Waste pipe fitting to drain	4	600
<b>Toilet</b>	5 toilets at different rooms	3 functional 2dyfunctional	-	-	-
	Bibcock	NA	bibcock	3	1500
	Flush cock	NA	New flush cock fitting	1	1000
<b>Bathroom</b>	3 Bathrooms	NA	Tap replacement bibcock	3	1500
	Bibcock	NA	New Bibcock	4	2000
<b>Hand free hand wash basin</b>	Hand wash liquid with bottle		New	3	900
	sanitizer stand		New	2	4000
	Hand wash liquid		5ltr can + 500 2 bottles	1	700



PHC ZAMANZAR					
Infrastructure	Description	Status	Need	Nos	cost
<b>BMWM</b>	Separate dustbins	NA	1 set of dustbins	1	2800
	Trolley	NA	hold waste bins in wards / storage place	1	7500
	Needle cutter machine	NA	Electrically operated	2	3000
	Trolley	NA	For transportation	1	15000
	Simple Trollies	NA	For transportation	1	2000
	Dedicated storage facility/area/ room	OK	-	-	-
	Incinerator repair/ Installation/ Major work	NA	-	-	-
<b>IEC</b>	IEC Poster	NA	IEC Design for hand wash, hygiene, BMW	1	10000
				<b>Total</b>	<b>93865</b>

## 13. RURAL HOSPITAL KHANDBARA

### 13.1. Staff Information:

Sr. No.	Name of Post	No. of Person
1	M.S	1
2	M.O	0
2	Staff Nurce	0
3	ANM	7
4	Pharmasist	2
5	Ward Boy	4
6	Ward Aaya	0
7	Lab Technician	1
8	Cleaning staff	2
	Support Staff	3
	<b>TOTAL</b>	<b>20</b>

### 13.2. Existing Status of Hospital/WASH Infrastructure

Water	<ul style="list-style-type: none"> <li>➤ Drinking Water</li> <li>1. Source: Bore-well</li> <li>2. Storage: 2000 ltr. PVC</li> <li>3. 3 RO/UV purifier is provided.</li> </ul>
	<ul style="list-style-type: none"> <li>➤ Other Uses</li> <li>1. Source: Bore-well</li> <li>2. Storage: 17000 ltr. PVC Tank &amp; 35000 RCC (Ground level storage)</li> </ul>

	Total Storage: 52000 ltr.
Toilet	8 Toilets are available in different location No Toilets for PWSN All are not functional No Cleaning material Available
Hand Washing Station / wash Basin	13 wash Basin are available
Waste Segregation / Dustbin	Not Enough No partition available near dustbins Dedicated storage not available
Hygiene	No hand sanitizer before entry in the hospital
BMWM	Inadequate segregation Trolley not available Needle Hub available Disposal system is waste transfer to the private agency

**Status of WASH facilities:**

S. No		Current Status of Infrastructure			Requirements		Scope of Work
		Available	Functional	Dysfunctional	New Infrastructure	Retrofitting	Restoration work details
1	Water Source	1	1	0	0	0	-
2	Water Storage for Drinking Water	2000L	2000L	0	0	0	-
3	Water Storage for Other purpose	52000L	51000L	1000L	1	6	Need to replace 1 PVC tank due to leaking issue. & need 6 water tank cover.
4	Drinking Water Station	3	2	1	1	1	New RO and Servicing of available 1 unit

S. No		Current Status of Infrastructure			Requirements		Scope of Work
		Available	Functional	Dysfunctional	New Infrastructure	Retrofitting	Restoration work details
5	Hand washing basins	13	13	0	2	13	Replacing tap with Elbow operated tap, fixing of foot operated HWS.
6	Sanitizer stand	0	0	0	2	0	New sanitizer stand fixing
7	Gents Toilets in Hospital	4	3	1	0	1	Need to fix new door and need 4 flush tank for toilets.
8	Ladies Toilet in Hospital	4	2	0	0	2	There is water problem need new water tank
9	PWD toilet	0	0	0	1	0	New construction

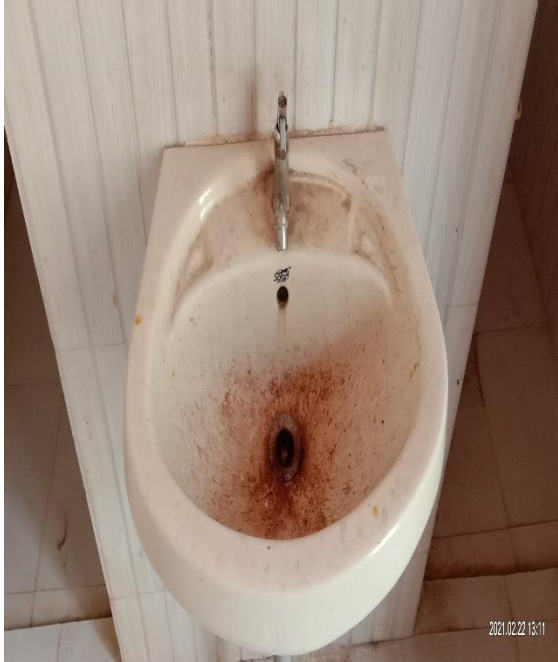
### 13.3. Existing Status of BMWM facilities:

S. No		Current Status of Infrastructure			Requirements		Scope of Work
		Available	Functional	Dysfunctional	New Infrastructure	Retrofitting	Restoration work details
1	Separate dustbins	2	2	0	1	0	New dustbins required for segregation
2	Trolley to hold waste bins in wards / storage place	0	0	0	2	0	New required
3	Needle cutter machine	0	0	0	2	0	New required
4	Trolley for transportation	0	0	0	1	0	New required
5	Simple Trollies for transportation	0	0	0	2	0	New required
6	Dedicated storage facility/area/	0	0	0	1	0	New required

S. No		Current Status of Infrastructure			Requirements		Scope of Work
		Available	Functional	Dysfunctional	New Infrastructure	Retrofitting	Restoration work details
	room						
7	Incinerator repair/ Installation/ Major work	0	0	0	1	-	New required

**Current situation of WASH infrastructure:**









#### 13.4. Proposed Hospital Infrastructure Renovation Action Plan

##### RURAL HOSPITAL KHANDBARA

Infrastructure	Description	Status	Need	Nos	Cost
<b>Drinking water</b>	PWSS	OK	-	-	-
	Water filter	Defunct	Servicing	2	2000
	Water filter	NA	New installation	1	10000
<b>water storage</b>	overhead PVC water tank and underground RCC tank	Defunct	Need Replace	1	13000
			all overhead RCC tank to be replaced with HDPE tank	6	8000
			Tank Cleaning	6	3000
<b>Hand wash basin</b>	13 basins at different locations	OK	Tap to be changed with elbow operated tap	10	10000
<b>Toilet</b>	8 toilets at different locations	Defunct	chock up removal by chamber cleaning, need flush tank, new tabs	6	12000
<b>Hand free hand wash basin</b>	Fabricated stand	NA	New	2	9000
	Plumbing with all fitting	NA	New	2	5544
	Hand wash liquid with bottle		New	2	600
	Painting		New	2	238
	sanitizer stand		New	2	4000
	Hand wash liquid			5ltr can + 500 2 bottles	2
<b>BMWM</b>	Separate dustbins	NA	set of dustbins	1	2800
	Trolley	NA	hold waste bins in wards / storage place	2	15000
	Needle cutter machine	NA	Electrically operated	2	3000
	Trolley	NA	For transportation	1	15000
	Simple Trollies	NA	For transportation	2	4000
		Dedicated storage facility/area/ room	OK	-	-
	Incinerator repair/ Installation/ Major work	NA	-	-	-
<b>IEC</b>	IEC Material	NA	IEC poster for hand wash, BMW etc.	-	10000
				<b>Total</b>	<b>1,28,582</b>

#### 14. Total Cost per Healthcare facility

Sr.no	Name of the Hospital	Location	Cost
1.	Sub-District Hospital Navapur	Navapur, Dist.- Nandurbar	1,39,682
2.	Rural Hospital Visarwadi	Navapur, Dist.- Nandurbar	2,38,582
3.	Rural Hospital Khandbara	Navapur, Dist.- Nandurbar	1,28,582
4.	Primary Health Centre Chinchpada	Navapur, Dist.- Nandurbar	1,32,519
5.	Primary Health Centre Gatadi	Navapur, Dist.- Nandurbar	93419
6.	Primary Health Centre Pratappur	Navapur, Dist.- Nandurbar	76,651
7.	Primary Health Centre Umraan	Navapur, Dist.- Nandurbar	48,491
8.	Primary Health Centre Zamanzhar	Navapur, Dist.- Nandurbar	93,865
<b>TOTAL COST</b>			<b>9,51,811</b>